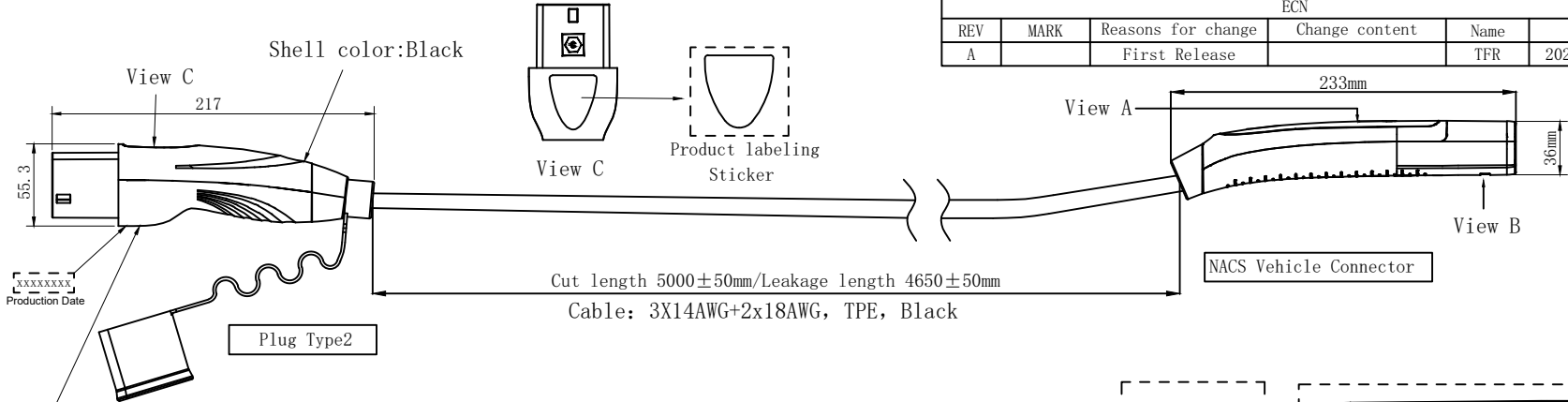
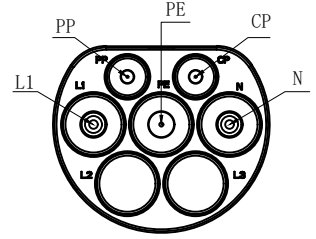


ECN					
REV	MARK	Reasons for change	Change content	Name	Date
A		First Release		TFR	2024. 08. 20



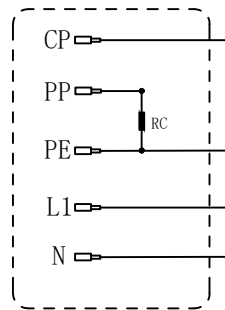
Model: SP-EVM-16AS
 SPEC: 250V AC 16A 50Hz

Product labeling

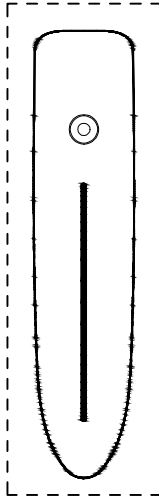
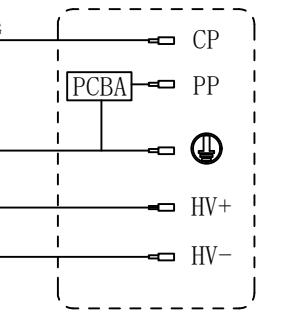


Pin Layout Chart

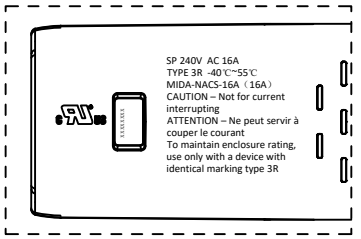
Vehicle Connector wiring diagram



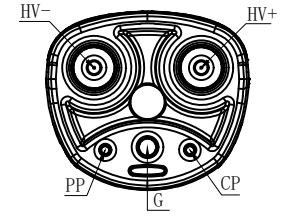
NACS Vehicle Connector wiring diagram



View A Sticker



View B



Technical Requirement:

- Product description: It meets the design and test requirements of SAE J1772-2010 or IEC 62196-2017; Control box meets the design and test requirements of IEC 61851-2017
- Product performance: Voltage rating 240V
Current rating 16A
Dielectric Withstanding Voltage >2500V
- Appearance of the product: No oil stain, burr or other defects affecting the function of the product are found on the surface of the product.
- Resistance: R6, 150 Ω; R7, 330 Ω; Rc220 Ω
- Control dimension: The dimension marked is the key dimension, which needs to be controlled.
- Environmental protection requirements: products meet RoHS requirements;

Customer signature:



Approval	Check	Design	 Unit: mm Sheet: A4 Scale: Page:	-Unnoted tolerance- X ±0.30 X.X ±0.20 X.XX ±0.10 Angle ±1°	SPvolt EV Charging Cable Co.Ltd		
					info@spvolt.com		
					Name:	NACS Vehicle Connector	
					Part number:		
			Material:	Weight:	Draw number:	YT4-XC-199-01	