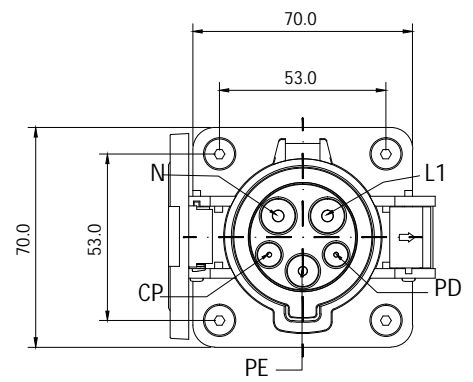
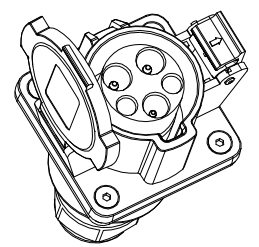
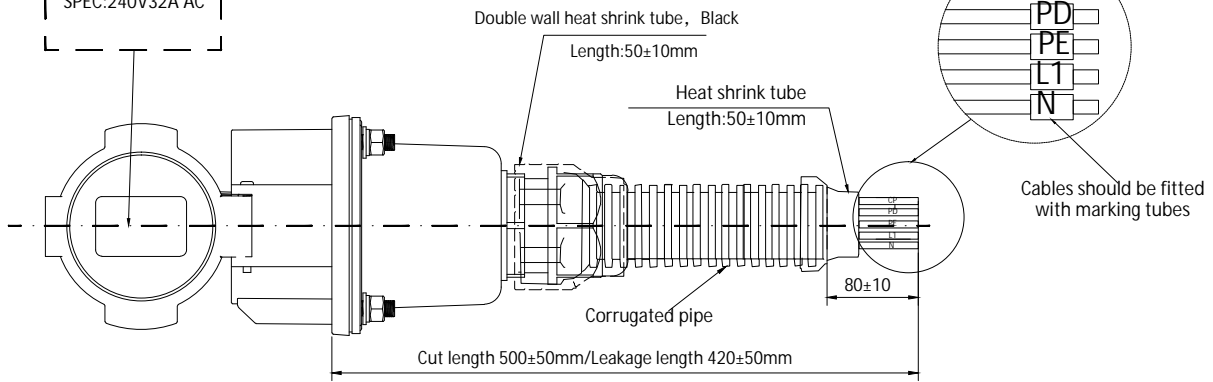


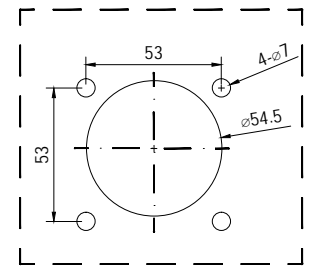
ECN					
RE	MARK	Reasons for change	Change content	Name	Date
V		First Release		W.Z	2024.06.04
A					



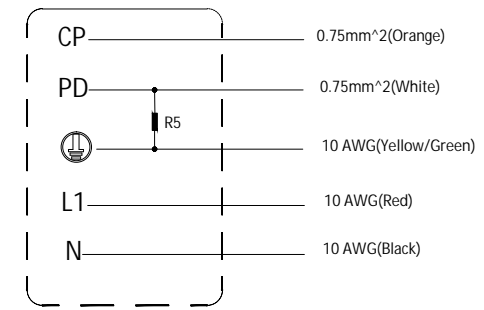
Product labeling
 SPEC:240V32A AC



Recommended opening size



Vehicle inlet wiring diagram



Technical Requirement:

- 1.Product description: It meets the design and test requirements of SAE J1772-2010;
- 2.Product performance:Voltage rating 240V
Current rating 32A
Dielectric Withstanding Voltage>2000V
- 3.Resistance: R5, 2700 ;
- 4.Appearance of the product: No oil stain, burr or other defects affecting the function of the product are found on the surface of the product.
- 5.Control dimension: The dimension marked is the key dimension,which needs to be controlled.
- 6.Environmental protection requirements: products meet RoHs requirements;

Customer signature:



Approval	Review	Design		-Unmarked tolerance-		SPVOLT EV CHARGING CABLE CO.,LTD	
				X ±0.30		info@spvolt.com	
				X.X ±0.20		Name: TYPE1 Vehicle Inlet	
				X.XX ±0.10		Part number:	
			Unit: mm	Angle ±1°	Material:	Weight :	Drwaw number
			Sheet: A4 S				YT5-Y99-029
			cale:				
			Page:				