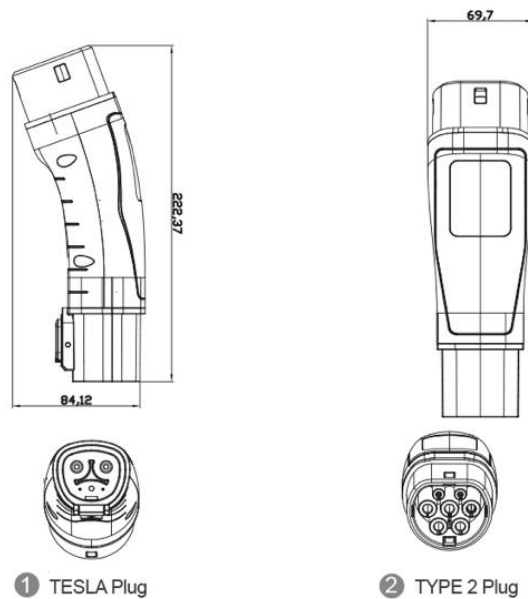




**PRODUCT NAME:**  
**TESLA TO TYPE 2 ADAPTER**

**APPLICATION:**

The Tesla to Type 2 is an adapter that allows level 1 and level 2 NACS chargers connect with a Type 2 inlet. Compatible with the NACS high powered wall connectors, all generation of destination chargers, and mobile connectors.



**SPECIFICATIONS:**

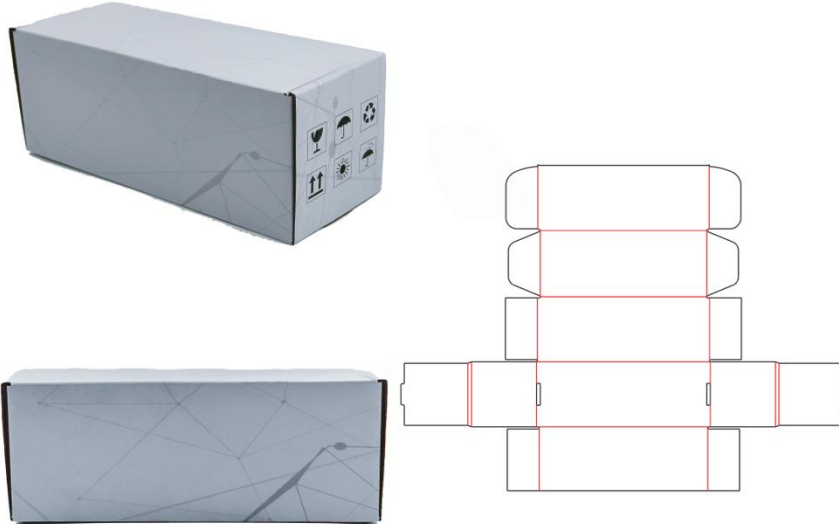
- Current: Max. 60A
- Operating voltage: 240V AC
- Insulation resistance: >1,000mΩ
- Contact resistance: <5mΩ
- Flame retardant grade: UL94-V0
- Operating temperature: -30°C ~ 50°C
- Pins: Copper alloy, silver plated
- Service life: >10,000 times

- Housing material: Plastic(PC+ABS)
- Storage temperature: -40°C ~ +85°C
- Protection grade: IP54

Protection from dirt, dust, oil, and other non-corrosive material. Complete protection from contact with enclosed equipment. Protection from water, up to water projected by a nozzle against enclosure from any direction.

**TRAVEL STORAGE BAG:**

- Travel storage bag: Easy-carry.



- Package dimensions: 19\*9\*9cm, weight: 0.3kg.

**PORTABLE:**

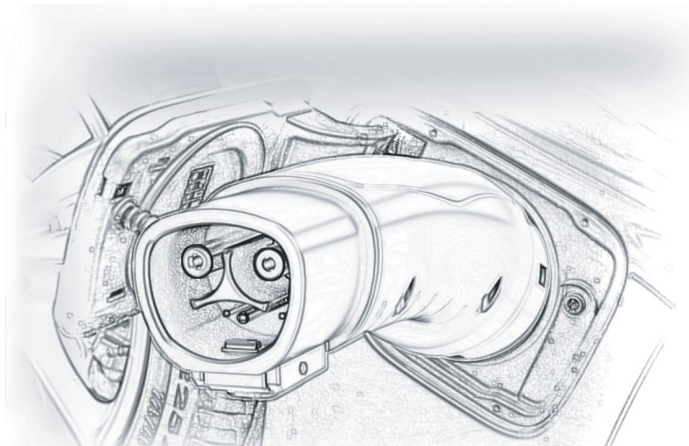
- The Tesla to Type 2 Adapter is compact and durable, making it ideal for charging on the go.
- Keep it conveniently in your car to charge your electric vehicle quickly and easily.

**WORKING PRINCIPLE:**

When the adapter socket end is inserted into the NACS charging station plug, it can realize the interchange charging between the US standard AC charging plug and the NACS charging station.

**HOW TO USE:**

- Simply plug your Tesla to Type 2 adapter into the charging station first and then into your car. To remove it from your vehicle, simply authorize it from your car or on your phone.





- The Tesla to Type 2 Plug will allow you to charge EV (Hyundai, Ford, KIA, Polestar, Vin Fast, Lexus, Toyota, etc.) with a NACS plug. Whether you're visiting a friend or using a public Tesla charging station (besides superchargers) this adapter will allow you to charge your Type 2 compatible vehicle

**CAUTIONS:**

- It's not a toy, keep away from your children.
- Clean only with dry cloth.
- Avoid dismantling, dropping or heavy impact.

**STORAGE AND MAINTENANCE:**

- Store the adapter in a cool, dry place.
- Regularly inspect the adapter for any signs of wear or damage.
- Clean the adapter with a dry cloth; do not use water or solvents.

**WARRANTY:**

- This product includes a 1-year warranty.
- In case of misuse, mishandling, negligence, vehicle accidents or modifications, the warranty will be voided. Our warranty only covers manufacturing defects.