



PRODUCT NAME:
TYPE 2 TO GBT ADAPTER

APPLICATION:

This adapter is for TYPE 2 charging station to GBT car end. Adapters for China Standard car charging from European Standard charging station.

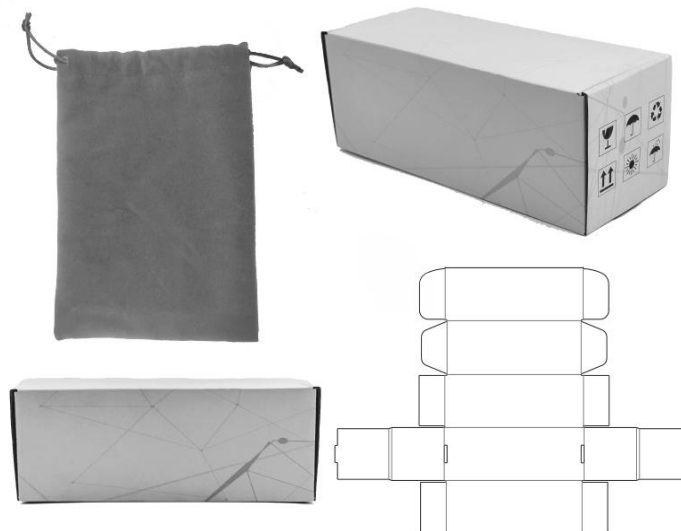
SPECIFICATIONS:

- Current: Max. 32A
- Operating voltage: 220V / 415V AC
- Insulation resistance: >1,000mΩ
- Contact resistance: <5mΩ
- Flame retardant grade: UL94-V0
- Operating temperature: -30°C ~ 50°C
- Pins: Copper alloy, silver plated
- Service life: >10,000 times
- Housing material: Plastic (PC + ABS)
- Storage temperature: -40°C ~ +85°C
- Protection grade: IP54

Protection from dirt, dust, oil, and other non-corrosive material. Complete protection from contact with enclosed equipment. Protection from water, up to water projected by a nozzle against enclosure from any direction.

TRAVEL STORAGE CASE:

- Travel storage bag: Easy-carry.



- Packing dimensions: 19*9*9cm, weight: 0.5kg.
- The TYPE 2 to GBT adapter storage box has a fleece pouch inside for dust protection and environmental protection.

COMPATIBILITY:

Ensure your electric vehicle is compatible with Type 2 and GBT connectors and supports AC 32A single-phase or three-phase charging.

SAFETY PRECAUTIONS:

- Inspect the adapter for any visible damage before use.
- Do not use if the adapter appears damaged or if there are exposed wires.
- Keep the adapter away from water and moisture during use.
- Do not attempt to disassemble the adapter, contact a professional for any repairs.

CONNECTION PROCESS:

- Insert the Type 2 Male Plug into the corresponding Type 2 socket on your electric vehicle.
- Connect the GBT Male Plug to the charging station or power source.
- Ensure a secure connection by applying gentle pressure. Do not force the connection.

CHARGING PROCESS:

- For single-phase charging, follow the same steps as for three-phase charging.
- Power on the charging station or power source.
- Your electric vehicle should indicate that it is charging
- Monitor the charging process through your vehicle's display.

DISCONNECTION:

- Power off the charging station or power source.
- Press any release buttons if applicable on your vehicle or charging station.
- Disconnect the Type 2 Male Plug from your vehicle and the GB/T Male Plug from the charging station.

CAUTIONS:

- It's not a toy, keep away from your children.
- Clean only with dry cloth.
- Avoid dismantling, dropping or heavy impact.

STORAGE AND MAINTENANCE:

- Store the adapter in a cool, dry place.
- Regularly inspect the adapter for any signs of wear or damage.
- Clean the adapter with a dry cloth; do not use water or solvents.

WARRANTY:

- This product includes a 1-year warranty.
- In case of misuse, mishandling, negligence, vehicle accidents or modifications, the warranty will be voided. Our warranty only covers manufacturing defects.