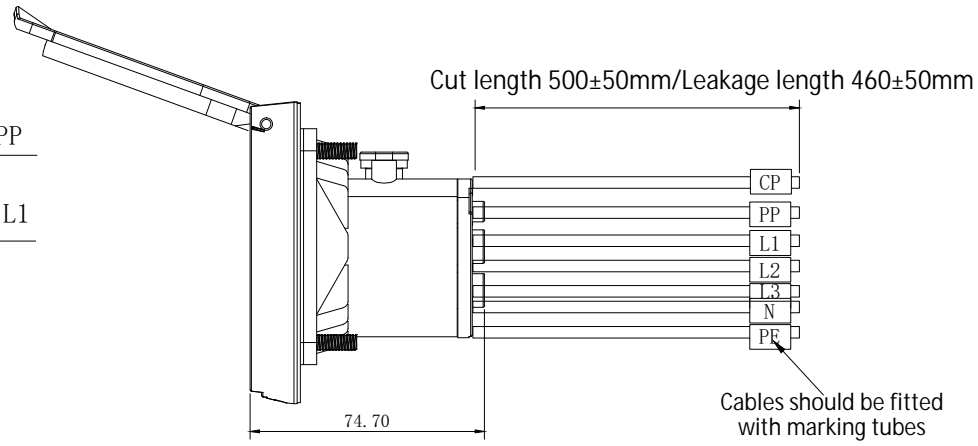
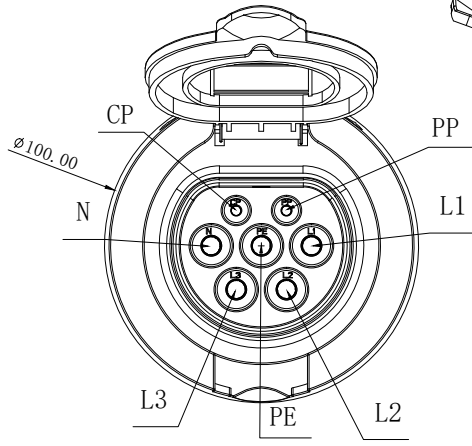
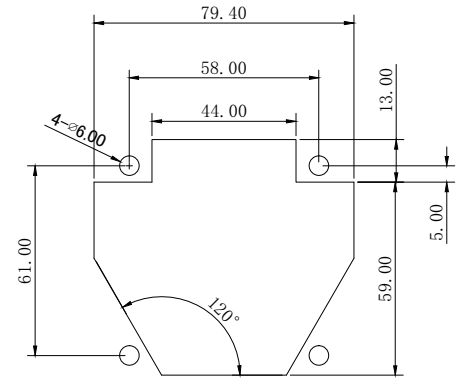


ECN					
REV	MARK	Reasons for change	Change content	Name	Date
A		First Release	First Release	W. Z	2023. 03. 27

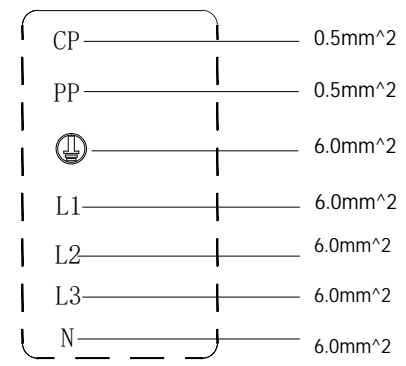


Cables should be fitted with marking tubes



Recommended opening size

Socket-Outlet wiring diagram



Technical Requirement:

- 1.Product description: It meets the design and test requirements of IEC 62196-II f-2014;
- 2.Product performance:Voltage rating 480V
Current rating 32A
Dielectric Withstanding Voltage>2000V

3.Appearance of the product: No oil stain, burr or other defects affecting the function of the product are found on the surface of the product.

4.Control dimension: The dimension marked is the key dimension, which needs to be controlled.

5.Environmental protection requirements: products meet RoHs requirements;



Approval	Check	Design		-Unnoted tolerance-		
				X	±0.30	
				X.X	±0.20	
				X.XX	±0.10	
				Angle	±1°	
Unite: mm			Material:	Weight:		
Sheet: A4						
Scale:						
Page:						

SP VOLT EV CHARGING CABLE CO.,LTD	
info@spvolt.com	
Name:	TYPE2 Socket-Outlet
Part number:	
Draw number:	YT5-Y99-035