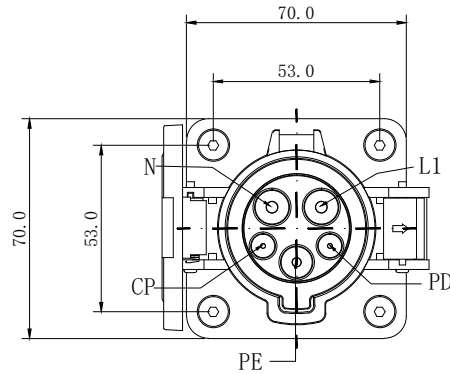
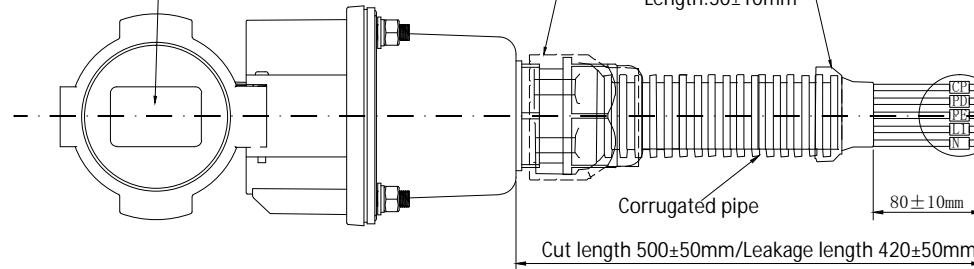
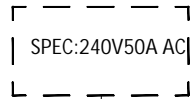


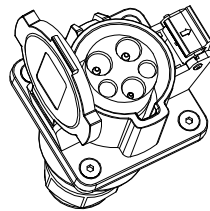
ECN					
REV	MARK	Reasons for change	Change content	Name	Date
A		First Release		W. Z	2024. 05. 06



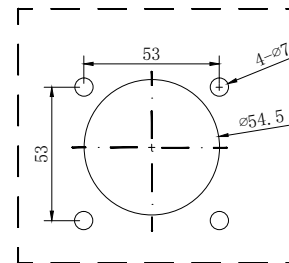
Product labeling



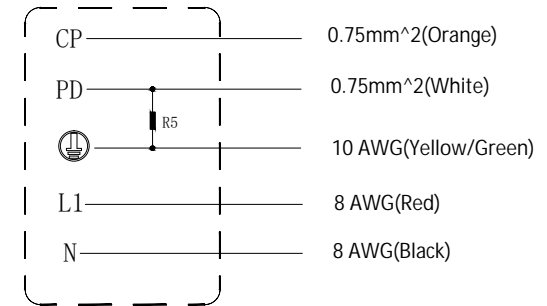
Cables should be fitted with marking tubes



Recommended opening size



Vehicle inlet wiring diagram



Technical Requirement:

1.Product description: It meets the design and test requirements of SAE J1772-2010;

2.Product performance:Voltage rating 240V
Current rating 50A
Dielectric Withstanding Voltage>2000V

3.Resistance: R5, 2700 ;

4.Appearance of the product: No oil stain, burr or other defects affecting the function of the product are found on the surface of the product.

5.Control dimension: The dimension marked is the key dimension,which needs to be controlled.

6.Environmental protection requirements: products meet RoHs requirements;

Customer signature:



Approval	Review	Design	-Unmarked tolerance-		SP VOLT EV CHARGING CABLE CO.,LTD info@spvolt.com	
			Unit: mm	X ±0.30	Name:	TYPE1 Vehicle Inlet
			Sheet: A4 S	X.X ±0.20	Part number:	
			cale:	X.XX ±0.10	Drwaw number	YT5-Y99-031
			Page:	Angle ±1°		
				Material:		
				Weight :		